

# Water meter

## Cold and hot water meter VM/VMH

### Application:

It is used for precise measuring of cold water flow rate with temperature up to 40°C and hot water with temperature up to 90°C.

### Shape:

Water meter consists of:

- Brass casing with threaded connection,
- Turbine metering wheel
- dials to show the measured amount of water.

It is easy to install.



### Features:

- The accuracy class B ISO 4064,
- Nominal pressure PN16,
- Maximum water temperature 40°C/90°C,
- pressure loss at nominal flow rate is less than 0,25 bar

Type		VM/VMH 15	VM/VMH 20	VM/VMH 25	VM/VMH 32	VM/VMH 40	VM/VMH 50
Nominal diameter	mm	15	20	25	32	40	50
Installation length	mm	165	190	260	260	300	270
Maximum flow rate $Q_{max}$	m <sup>3</sup> /h	3	5	7	12	20	30
Nominal flow rate $Q_n$	m <sup>3</sup> /h	1,5	2,5	3,5	6	10	15
Minimum flow rate $Q_{min}$	l/h	15	25	35	60	100	450
Thread connection		R ¾"	R 1"	R 5/4"	R 6/4"	R 2"	R 2 ½"
Mass	kg	1,5	1,6	2,2	2,5	3,7	7,5

# Pulse emitter water meter

Pulse emitter water meter for cold and hot water VMDI/VMHDI

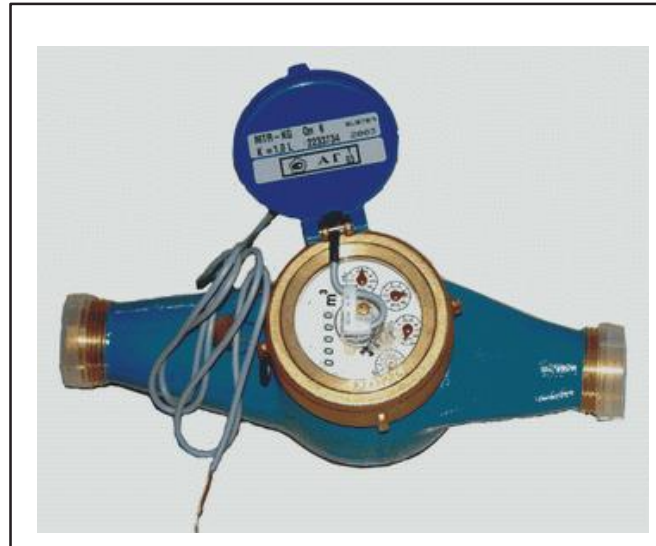
## Application:

It is used for precise measuring of cold water flow rate with temperature up to 40°C and hot water with temperature up to 90°C.

Water meter consists of:

- Brass casing with threaded connection,
- Turbine metering wheel
- dials to show the measured amount of water.

It is easy to install.



## Features:

- The accuracy class B ISO 4064,
- Nominal pressure PN16,
- Maximum water temperature 40°C/90°C,
- pressure loss at nominal flow rate is less than 0,25 bar

Type		VMDI/VMHDI 15	VMDI/VMHDI 20	VMDI/VMHDI 25	VMDI/VMHDI 32	VMDI/VMHDI 40	VMDI/VMHDI 50
Nominal diameter	mm	15	20	25	32	40	50
Installation length	mm	165	190	260	260	300	270
Maximum flow rate $Q_{max}$	m <sup>3</sup> /h	3	5	7	12	20	30
Nominal flow rate $Q_n$	m <sup>3</sup> /h	1,5	2,5	3,5	6	10	15
Minimum flow rate $Q_{min}$	l/h	15	25	35	60	100	450
Mass	kg	1,5	1,6	2,2	2,5	3,7	7,5
Thread connection		R 3/4"	R 1"	R 5/4"	R 6/4"	R 2"	R 2 1/2"
<b>Pulse emitter</b>							
Reed kontakt RH1	l/imp.	1	1	1	1	1	1
Reed kontakt RH100	l/imp.	100	100	100	100	100	100